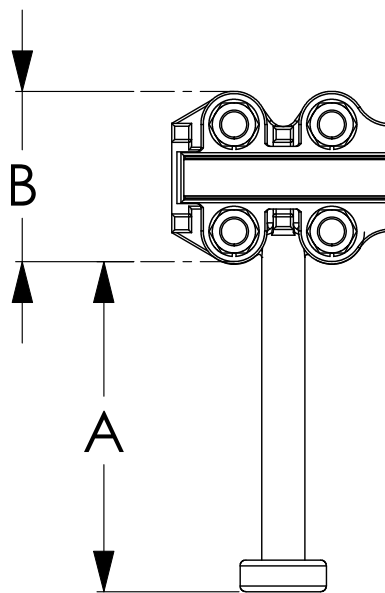
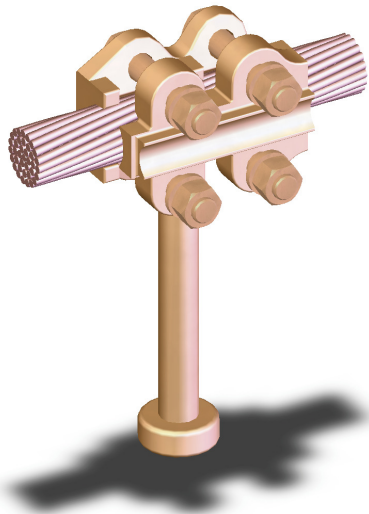


SECTION

17-6

BRONZE GROUNDING,
CABLE RUN TO GROUNDING ROD

Manufactured of a copper-alloy for high conductivity and natural resistance to stress, the type BCGS conveniently joins a grounding stud to a copper cable. To facilitate installation, all bolt heads are recessed.

BRONZE TEE CONNECTORS CABLE RUN TO GROUNDING STUD						
CATALOG NUMBER	CABLE MAIN		PIPE TAP	DIMENSIONS IN INCHES		
	AWG MIN.	or MCM MAX.		A	B	K
17-1201	8	600	3/4	6	2 1/4	3/8
17-1202	4/0	1000	2	6	3	1/2
17-1203	1000	1500	2	6	3 1/4	1/2
17-1204	1500	2000	2 1/2	6	3 1/4	1/2