

## SECTION

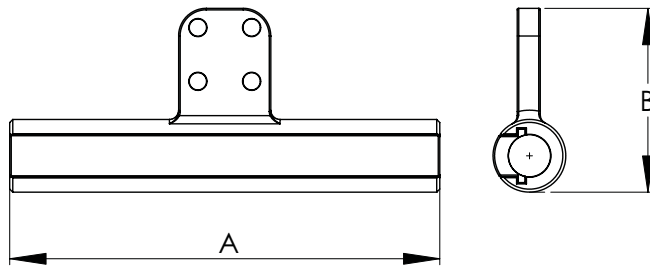
## 16-2A



The cast electrical aluminum compression terminals for connecting aluminum cable bus to a perpendicular flat pad have the crimping die sizes clearly marked for ease of installation.



# ALUMINUM COMPRESSION TEE FITTINGS CABLE TO FLAT PAD



ALUMINUM Type -T						
CATALOG NUMBER w/PAD SIZE	CABLE SIZE AWG or MCM MIN. MAX	ASCR SIZE AWG or MCM MIN. MAX	CONDUCTOR DIAMETER	DIMENSIONS A B		DIE REF.
16-123B-T	#2	#2	.292-.325	5 3/4	1 1/2	.840
16-124B-T	1/0	1/0	.355-.398	5 3/4	1 1/2	.840
16-124C-T	1/0	1/0	.355-.398	6 1/4	1 1/2	.840
16-125B-T	2/0	2/0	.414-.447	6	2	.840
16-125C-T	2/0	2/0	.414-.447	6 1/2	2	.840
16-128B-T	3/0	3/0	.464-.502	6	2	.840
16-128C-T	3/0	3/0	.464-.502	6 1/2	2	.840
16-129B-T	4/0	4/0	.522-.563	7 1/4	3 3/4	.840
16-129C-T	4/0	4/0	.522-.563	7 1/2	3 3/4	.840
16-130B-T	226.8-300	266.8(26/7)	.586-.642	7 3/4	3 3/4	1.125
16-130C-T	226.8-300	266.8(26/7)	.586-.642	7 7/8	3 3/4	1.125
16-134B-T	336.4(19)-350(37)	336.4(36/1)-336.4(18/1)	.666-.684	7 1/2	3 3/4	1.125
16-134C-T	336.4(19)-350(37)	336.4(36/1)-336.4(18/1)	.666-.684	8 3/4	3 3/4	1.125
16-139B-T	397.5(19)-400(37)	336.4(26/7)-397.5(18/1)	.721-.743	8 1/2	3 3/4	1.125
16-139C-T	397.5(19)-400(37)	336.4(26/7)-397.5(18/1)	.721-.743	8 3/4	3 3/4	1.125
16-144B-T	450(37)-500(37)	397.5(24/7)-477(18/1)	.772-.814	9	5	1.312
16-144C-T	450(37)-500(37)	397.5(24/7)-477(18/1)	.772-.814	10	5	1.312
16-146B-T	550(61)-556.5(37)	477(24/7)-477(30/7)	.846-.883	11	5	1.312
16-146C-T	550(61)-556.5(37)	477(24/7)-477(30/7)	.846-.883	10	5	1.312
16-148B-T	600(37)-650(91)	556.5(24/7)-556.5(30/7)	.879-.953	9 3/4	5 1/2	1.500
16-148C-T	600(37)-650(91)	556.5(24/7)-556.5(30/7)	.879-.953	10 1/2	5 1/2	1.500
16-152B-T	700(61)-795(61)	605(26/7)-636(30/19)	.964-1.028	11 1/2	6 1/4	1.500
16-152C-T	700(61)-795(61)	605(26/7)-636(30/19)	.964-1.028	11 1/2	6 1/4	1.500
16-152D-T	700(61)-795(61)	605(26/7)-636(30/19)	.964-1.028	12 1/8	6 1/2	1.500
16-158B-T	800(61)-817.5(61)	715.5(54/7)-715.5(30/19)	1.031-1.081	11 1/8	6 3/4	1.843
16-158C-T	800(61)-817.5(61)	715.5(54/7)-715.5(30/19)	1.031-1.081	11 1/8	6 3/4	1.843
16-158D-T	800(61)-817.5(61)	715.5(54/7)-715.5(30/19)	1.031-1.081	12 1/8	7	1.843
16-161B-T	900(37)-1000(61)	795(24/7)-874.5(54/7)	1.092-1.152	11 1/2	6 3/4	1.843
16-161C-T	900(37)-1000(61)	795(24/7)-874.5(54/7)	1.092-1.152	12	6 3/4	1.843
16-161D-T	900(37)-1000(61)	795(24/7)-874.5(54/7)	1.092-1.152	12 1/8	7	1.843
16-164B-T	1033.5(37)-1113(61)	900(54/7)-954(54/7)	1.162-1.216	11 1/2	7 1/4	2.125
16-164C-T	1033.5(37)-1113(61)	900(54/7)-954(54/7)	1.162-1.216	11 1/2	7 1/4	2.125
16-164D-T	1033.5(37)-1113(61)	900(54/7)-954(54/7)	1.162-1.216	12	7 3/8	2.125
16-165C-T	1200(91)-1272(61)	1033.5(54/7)-1113(54/19)	1.246-1.300	14	9 1/4	2.375
16-165D-T	1200(91)-1272(61)	1033.5(54/7)-1113(54/19)	1.246-1.300	14 1/2	9 3/8	2.375
16-167C-T	1400(91)-1510.5(61)	1272(45/7)-1351.5(54/19)	1.345-1.424	13 1/4	9 1/4	2.375
16-167D-T	1400(91)-1510.5(61)	1272(45/7)-1351.5(54/19)	1.345-1.424	14 1/2	9 3/8	2.375
16-168C-T	1590(61)-1700(127)	1351.3(54/19)-1510.5(54/19)	1.424-1.506	13 1/4	9 1/4	2.375
16-168D-T	1590(61)-1700(127)	1351.3(54/19)-1510.5(54/19)	1.424-1.506	14 1/2	9 3/8	2.375
16-169C-T	1750(127)	1570.5(54/19)-1590(54/19)	1.506-1.545	13 1/4	9 1/4	2.375
16-169D-T	1750(127)	1570.5(54/19)-1590(54/19)	1.506-1.545	14 1/2	9 3/8	2.375
16-170D-T	2000(91)(127)	1780(84/19)	1.602-1.659	15	9 1/4	2.937
16-171D-T		2156(84/19)		15	9 1/4	2.937
16-172D-T	2500(127)		1.824	15	9 1/4	2.937
16-173D-T	3000(127)		1.996	15	9 1/4	2.937
16-174D-T	3500(127)		2.160	15	9 1/4	2.937

To insure the long term service and reliability of compression connectors the use of filler compounds is essential. Additional filler should be used in any application where the connector is installed with the barrel in the upright position.