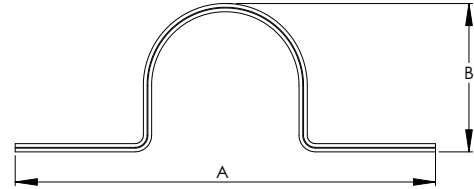
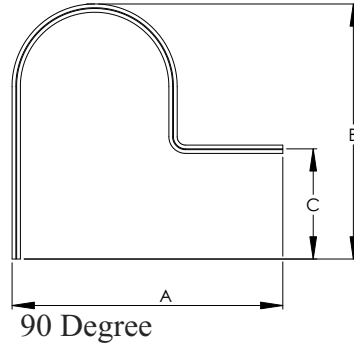
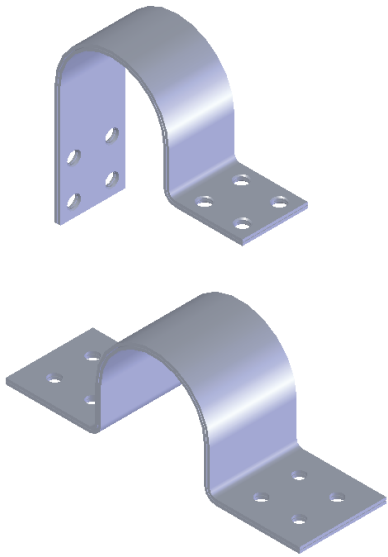


SECTION

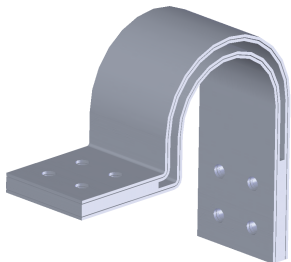
15-5A

ALUMINUM EXPANSION CONNECTORS
STRAIGHT AND 90 DEGREE BENDS



Made of a lightweight aluminum alloy, the Type AEB and Type AEB90 effectively protect equipment bushings, switch gear, and insulators from expanding or contracting pressures. The flexible shunts of laminated soft aluminum can withstand the maximum current listed.

Other current ratings are available upon request.



For example: 15-702-2000AMP

ALUMINUM EXPANSION CONNECTORS STRAIGHT AND 90° EXPANSION BENDS					
STRAIGHT					
CATALOG NUMBER	PAD STYLE	DIMENSIONS IN INCHES		CURRENT RATING	
		A	B		
15-691	B	17	6	340	
15-692	C	17	6	540	
15-693	D	17	6	700	
15-694	B	17	6	540	
15-695	C	17	6	760	
15-696	D	17	6	960	
90°					
CATALOG NUMBER	PAD STYLE	DIMENSIONS IN INCHES			CURRENT RATING
		A	B	C	
15-697	B	7	9	3	340
15-698	C	7	9	3	540
15-699	D	8	9	4	700
15-700	B	8	9	3	540
15-701	C	8	9	3	760
15-702	D	9	9	4	960