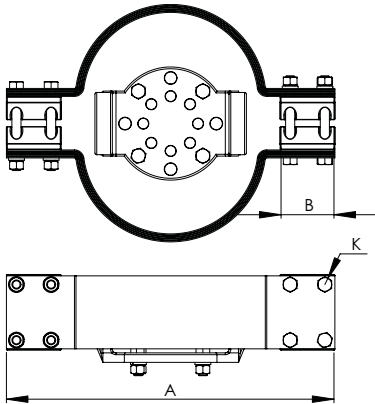
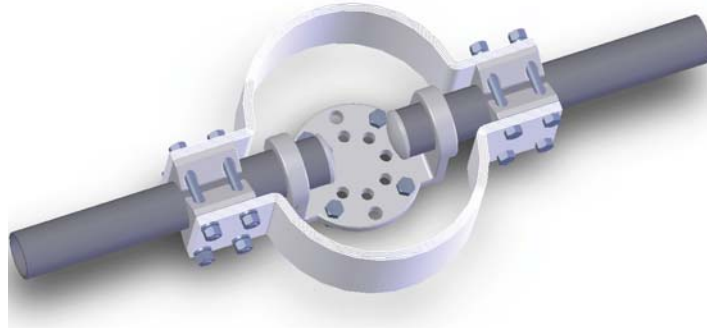


SECTION

15-3A

ALUMINUM EXPANSION
CONNECTORS BUS SUPPORTS

When it is necessary to join a pipe to a pipe bus and compensate for temperature variations, the Type AEBS proves a dependable connector. Made of a lightweight aluminum alloy, it effectively protects equipment bushings, switch gear, and insulators from expanding or contracting bus pressures.

The flexible shunts of laminated soft aluminum are designed to carry the maximum current of the bus it connects. Bolts, nuts, and lockwashers of high tensile aluminum insure greater clamping strength and resistance to wear. Steel galvanized bolts and lockwashers are normally supplied for mounting to the insulator cap.

ALUMINUM
EXPANSION CONNECTORS BUS SUPPORTS

| CATALOG NUMBER | PIPE SIZE IPS | BOLT CIRCLE | DIMENSIONS IN INCHES | | |
|----------------|---------------|-------------|----------------------|-------|-----|
| | | | A | B | K |
| 15-442 | 1/2 | 3 | 12 | 2 1/2 | 3/8 |
| 15-443 | 1/2 | 5 | 12 | 2 1/2 | 3/8 |
| 15-444 | 3/4 | 3 | 12 | 2 1/2 | 3/8 |
| 15-445 | 3/4 | 5 | 12 | 2 1/2 | 3/8 |
| 15-446 | 1 | 3 | 16 | 2 1/2 | 3/8 |
| 15-447 | 1 | 5 | 16 | 2 1/2 | 3/8 |
| 15-448 | 1 1/4 | 3 | 16 | 2 1/2 | 1/2 |
| 15-449 | 1 1/4 | 5 | 16 | 2 1/2 | 1/2 |
| 15-450 | 1 1/2 | 3 | 16 | 2 1/2 | 1/2 |
| 15-451 | 1 1/2 | 5 | 16 | 2 1/2 | 1/2 |
| 15-452 | 2 | 3 | 18 | 2 1/2 | 1/2 |
| 15-453 | 2 | 5 | 18 | 2 1/2 | 1/2 |
| 15-454 | 2 1/2 | 3 | 18 | 3 | 1/2 |
| 15-455 | 2 1/2 | 5 | 18 | 3 | 1/2 |
| 15-456 | 3 | 3 | 18 | 3 | 5/8 |
| 15-457 | 3 | 5 | 18 | 3 | 5/8 |
| 15-458 | 3 1/2 | 3 | 18 | 3 3/4 | 5/8 |
| 15-459 | 3 1/2 | 5 | 18 | 3 3/4 | 5/8 |
| 15-460 | 4 | 3 | 18 | 4 | 5/8 |
| 15-461 | 4 | 5 | 18 | 4 | 5/8 |
| 15-462 | 4 1/2 | 3 | 18 | 4 | 5/8 |
| 15-463 | 4 1/2 | 5 | 18 | 4 | 5/8 |
| 15-464 | 5 | 3 | 25 | 5 | 5/8 |
| 15-465 | 5 | 5 | 25 | 5 | 5/8 |
| 15-466 | 6 | 3 | 26 | 6 | 5/8 |
| 15-467 | 6 | 5 | 26 | 6 | 5/8 |