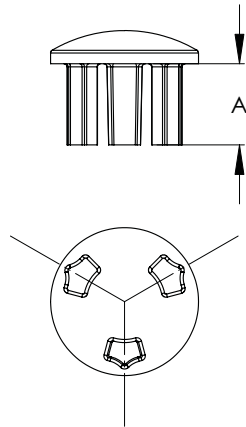


BRONZE / ALUMINUM INTERNAL CORONA BELLS

SECTION

111-1



BRONZE INTERNAL CORONA BELLS			
IPS CATALOG NUMBER	EHIPS CATALOG NUMBER	PIPE SIZE	DIMENSIONS IN INCHES A
111-101	111-102	1/2	1
111-103	111-104	3/4	1
111-105	111-106	1	3/4
111-107	111-108	1 1/4	1 1/4
111-109	111-110	1 1/2	1 1/4
111-111	111-112	2	1 1/4
111-113	111-114	2 1/2	1
111-115	111-116	3	1 1/2
111-117	111-118	3 1/2	1 1/2
111-119	111-120	4	1 1/2
111-121	111-122	4 1/2	1 3/4
111-123	111-124	5	1 7/8
111-125	111-126	6	2

Bronze Internal Corona Bells

Designed for a drive fit as the only means of connecting them to the pipe, the Types BCBI and BCBIH are primarily used for sealing off tubes and for corona reduction if it is found necessary. They are made of high strength copper alloy.



ALUMINUM INTERNAL CORONA BELLS			
IPS CATALOG NUMBER	EHIPS CATALOG NUMBER	PIPE SIZE	DIMENSIONS IN INCHES A
111-127	111-128	1/2	1
111-129	111-130	3/4	1
111-131	111-132	1	3/4
111-133	111-134	1 1/4	1 1/4
111-135	111-136	1 1/2	1 1/4
111-137	111-138	2	1 1/4
111-139	111-140	2 1/2	1
111-141	111-142	3	1 1/2
111-143	111-144	3 1/2	1 1/2
111-145	111-146	4	1 1/2
111-147	111-148	4 1/2	1 3/4
111-149	111-150	5	1 7/8
111-151	111-152	6	2

Aluminum Internal Corona Bells

Made of a lightweight, high strength aluminum alloy, the Types ACBI and ACBIH are designed for a drive fit as the only means of connecting them to the pipe. They are effective in sealing off tubes and in reducing corona when necessary.