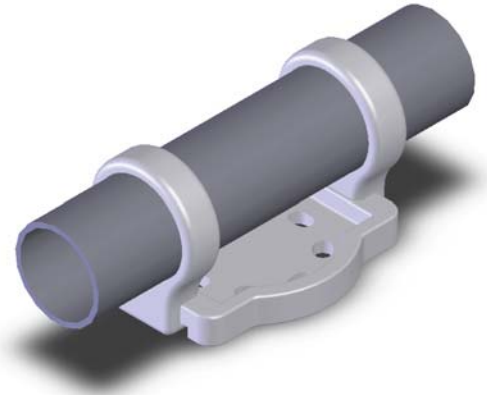
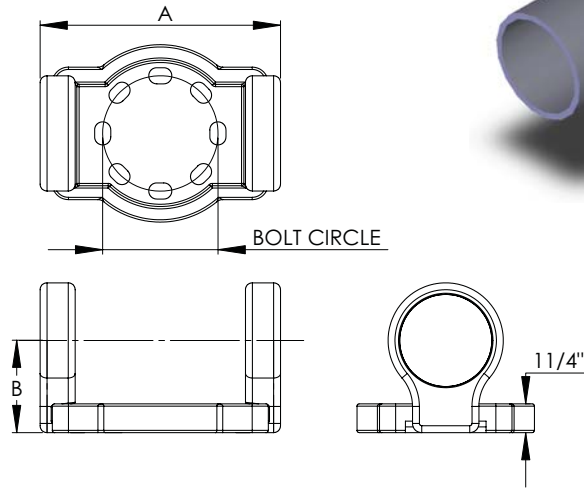


Cast of a lightweight and corrosion resistant aluminum alloy, the Type EHV WBS features eight holes for rotation and angular adjustment. Steel galvanized bolts and lockwashers are included for mounting to the insulator cap. Designed for either slip or rigid fit the, bus supports are capable of providing corona free performance at 345-500KV. Static eliminator springs come standard. For 7" bolt circles add the descriptor "7BC" into the product number. Example: 18-1244-7BC-345KV.



WELDED EHV OPEN BASE BUS SUPPORT				
CATALOG NUMBER	PIPE IPS	BOLT CIRCLE	DIMENSIONS IN INCHES	
			A	B
19-1232-345KV	2	5	10 3/8	3 1/4
19-1234-345KV	2 1/2	5	10 3/8	3 1/2
19-1236-EHV	3	5	10 3/8	3 3/4
19-1238-EKV	3 1/2	5	10 3/8	4
19-1240-EHV	4	5	10 5/8	4 3/4
19-1244-EHV	5	5	11	5 1/8
19-1246-EHV	6	5	11 1/8	5 1/4

# 19-5E