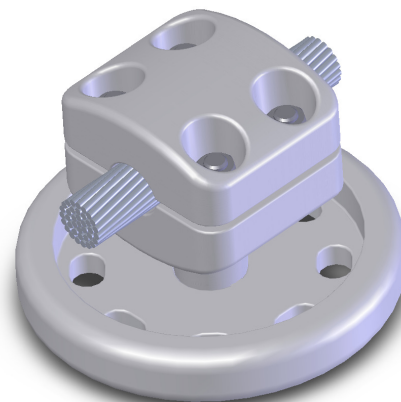
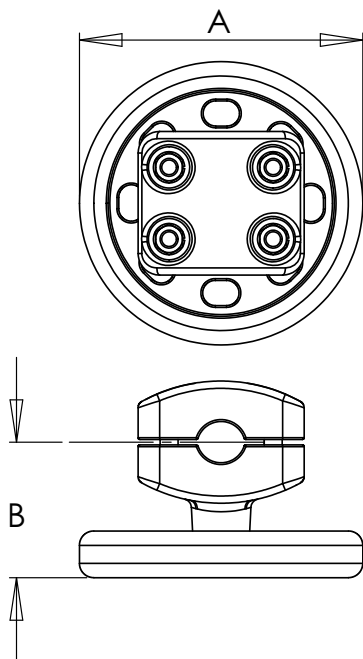


The Type EHV ASB features clamping hardware made of high tensile aluminum for resistance to corrosion and recessed bolt heads for single wrench installation. Corona free at 345KV, these connectors come with steel galvanized bolts and lockwashers for mounting to the insulator cap. The eight holes in the base of the bus support permit rotation and angular adjustment. When ordering please include the specific conductor size following the item number.



*Specify specific conductor size.

BOLTED EHV BUS SUPPORT						
CATALOG NUMBER	CONDUCTOR		BOLT CIRCLE	DIMENSIONS IN INCHES		
	AAC	ACSR		DIA.	B	A
19-404-EHV (*)	900-3500	795-2156	5	1.094-2.158	3 3/4	7 7/8
19-404-7BC-EHV (*)	900-3500	795-2156	7	1.094-2.158	3 3/4	10