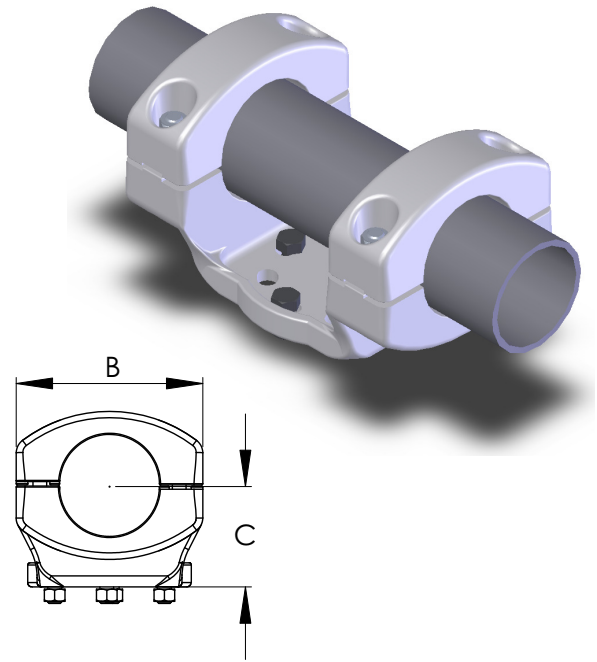
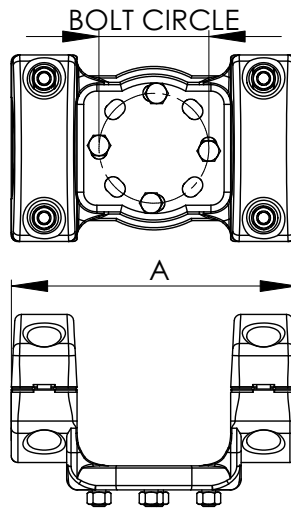


Connecting a bus to an insulator cap can be accomplished with ease and efficiency using the Type EHV AFSS. A connector made of a lightweight aluminum alloy, it includes high strength aluminum clamping hardware for dependability and steel galvanized bolts and lockwashers for proper mounting to the insulator cap. Recessed bolt heads allow single wrench installation and assist in the conductor's corona free performance at 500KV. The base of the bus support has eight holes for rotation and angular adjustment. Another notable feature is the reversible bus support cap which permits either slip or tight-fit applications.



| BOLTED EHV OPEN BASE BUS SUPPORTS |          |             |                      |        |       |
|-----------------------------------|----------|-------------|----------------------|--------|-------|
| CATALOG NUMBER                    | PIPE IPS | BOLT CIRCLE | DIMENSIONS IN INCHES |        |       |
|                                   |          |             | A                    | B      | C     |
| 19-190-345KV                      | 2        | 5           | 13 3/8               | 7 1/2  | 2 3/4 |
| 19-190-7-345KV                    | 2        | 7           | 15 1/8               | 7 1/2  | 2 3/4 |
| 19-192-345KV                      | 2 1/2    | 5           | 13 3/8               | 7 1/2  | 3 1/8 |
| 19-192-7-345KV                    | 2 1/2    | 7           | 15 1/8               | 7 1/2  | 3 1/8 |
| 19-194-EHV                        | 3        | 5           | 13 3/8               | 7 3/4  | 3 5/8 |
| 19-194-7-EHV                      | 3        | 7           | 15 1/8               | 7 3/4  | 3 5/8 |
| 19-196-EHV                        | 3 1/2    | 5           | 13 3/8               | 8      | 4     |
| 19-196-7-EHV                      | 3 1/2    | 7           | 15 1/8               | 8      | 4     |
| 19-198-EHV                        | 4        | 5           | 13 3/8               | 8 1/2  | 4 1/2 |
| 19-198-7-EHV                      | 4        | 7           | 15 1/8               | 10 1/2 | 4 1/2 |
| 19-202-EHV                        | 5        | 5           | 13 3/8               | 10 5/8 | 5     |
| 19-202-7-EHV                      | 5        | 7           | 15 1/8               | 10 5/8 | 5     |
| 19-204-EHV                        | 6        | 5           | 13 1/8               | 10 3/4 | 5 1/2 |
| 19-204-7-EHV                      | 6        | 7           | 15 1/8               | 10 3/4 | 5 1/2 |