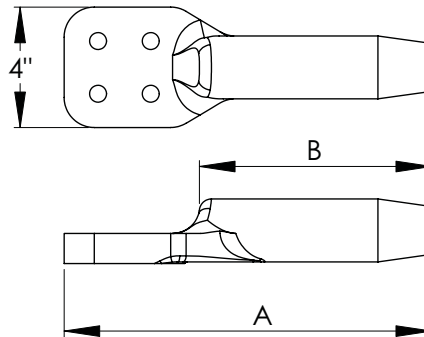
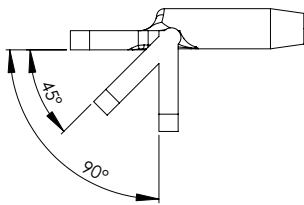


The cast electrical aluminum compression terminals for connecting aluminum cable bus to a flat pad have the crimping die sizes clearly marked for ease of installation. These connectors are capable of providing corona free performances at 345KV and 500KV. Hardware shields and mounting hardware are available but must be purchased separately.



For pads other than parallel to the cable bus add the degree variation from parallel to the catalog No. (Example: for pad 45 deg. from parallel to cable run specify catalog 16-161D-45-345KV).

BOLTED EHV TERMINAL CABLE TO FLAT PAD						
CATALOG NUMBER	CABLE SIZE		CONDUCTOR DIA.	DIMENSIONS IN		DIE REF.
	AAC	ACSR		A	B	
16-152D-345KV	700-795	605-636	.964-1.028	11 3/8	7 1/8	1.843
16-158D-345KV	800-817.5	715.5	1.031-1.081	11 3/8	7 1/8	1.843
16-161D-345KV	900-1000	795-874.5	1.092-1.152	11 3/8	7 1/8	1.843
16-164D-345KV	1033.5-1113	900-954	1.162-1.216	11 1/2	7 1/2	2.125
16-165D-345KV	1200-1272	1033.5-1113	1.246-1.300	1 4	9 1/4	2.375
16-167D-345KV	1400-1510.5	1272-1351.5	1.345-1.424	14 1/4	9 1/2	2.375
16-168D-345KV	1590-1700	1351.5-1510.5	1.424-1.506	14 3/8	9 5/8	2.375
16-169D-345KV	1750	1570.5-1590	1.506-1.545	14 3/8	9 5/8	2.375
16-170D-345KV	2000	1780	1.602-1.659	15 1/8	10 5/8	2.937
16-171D-EHV	-	2156	1.750-1.762	15 1/8	10 5/8	2.937
16-172D-EHV	2500	-	1.824	15 1/4	10 3/4	2.937
16-173D-EHV	3000	-	1.996	15 1/4	10 3/4	2.937
16-174D-EHV	3500	-	2.16	15 1/2	11	2.937